

**280 060 €**

**Stone house for sale**

**6 rooms**

**Surface : 140 m<sup>2</sup>**

**Surface of the living space : 40 m<sup>2</sup>**

**Surface of the land : 3754 m<sup>2</sup>**

**Year of construction : 1900**

**Exposure : Sud ouest**

**View : Jardin**

**Hot water : Electrique**

**Outdoor condition : good**

**Cover : slate**

**Benefits :**

calm, double glazing, fireplace or wood burning stove, stone house, spacious

3 bedroom

1 shower

2 WC

2 garage

**Energy class (old measure) : E**

**Climate class : B**

Document non contractuel

17/05/2024 - Prix T.T.C



## Stone house ref. 389V2033M Dinan

20 minutes from Dinan, House

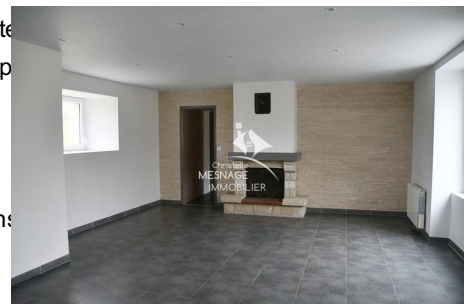
traditional 110 m<sup>2</sup> offering an entrance, a kitchen with access to the terrace and garden, a living room with fireplace insert with access to the terrace and garden, 4 bedrooms, 2 on the ground floor, a bathroom on the ground floor and a SDE, two small attics, a laundry, a garage and a workshop in the basement. All on a plot of 1 975 m<sup>2</sup>. Nice clear view, 2 minutes from Plumaudan, village with shops, doctor, pharmacy and school. DPE E Energy consumption 316 Kwh / m<sup>2</sup> per year. Ref.389V1372M.

Find all our real estate listings on [www.christellemesnage.com](http://www.christellemesnage.com).

A dynamic and professional agency that responds to all your requests for sale of houses, apartments, land in the region of DINAN or for all rentals.

The agency is open on Monday to Saturday from 9h to 7h. For real estate purchase or rental, contact the agency at 02.96.88.00.01.

Fees and charges are included in the price. The price is for the response.



Christelle Mesnage Immobilier - 14 Rue de la Ferronnerie - 22100 Dinan

Tel : 02.96.88.00.01 ou portable : 06.80.01.43.12.

[contact@christellemesnage.com](mailto:contact@christellemesnage.com) - [www.christellemesnage.com](http://www.christellemesnage.com) - Document non contractuel